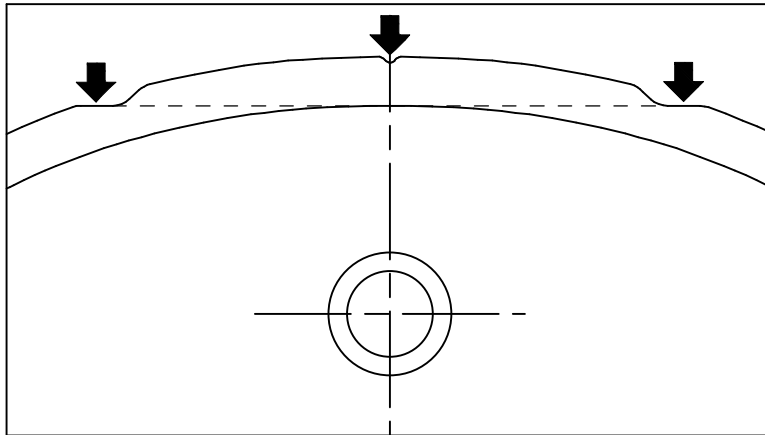
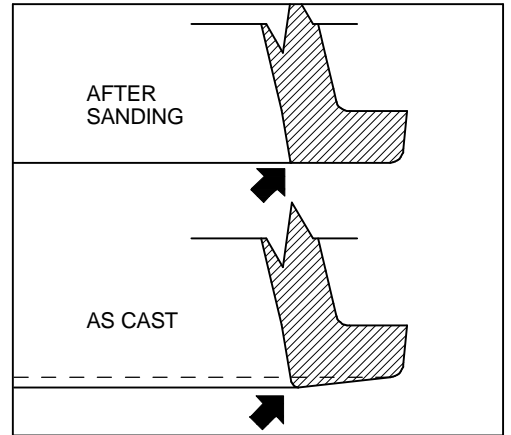


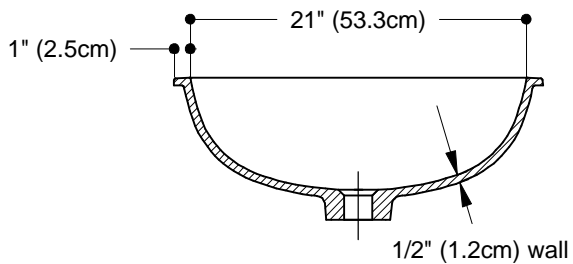
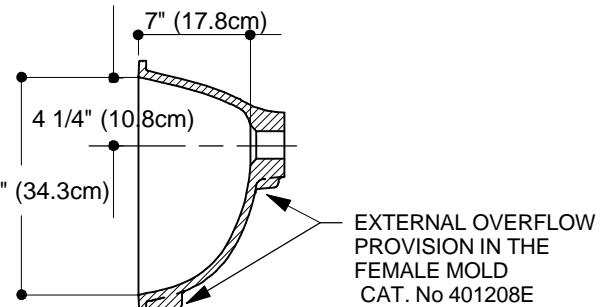
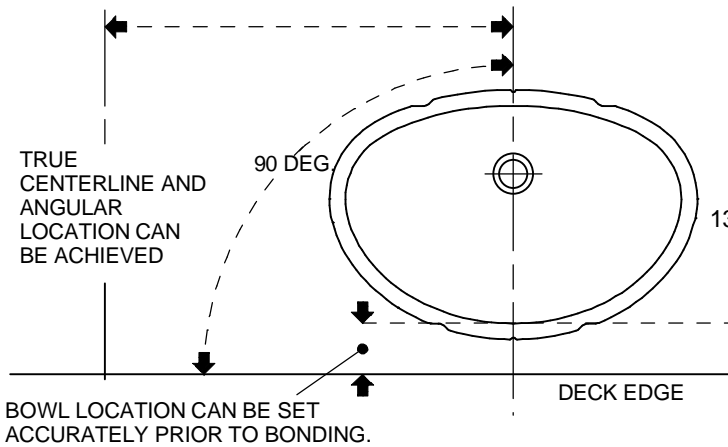
FABRICATION FEATURES AND BENEFITS OF THE SOLID SURFACE **OVAL** BOWL.



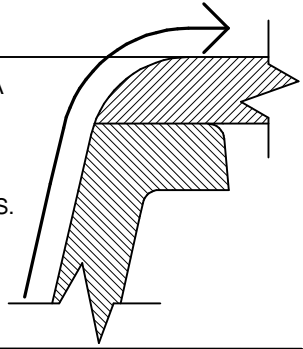
WHEN LOCATING AND BONDING THIS PURPOSE DESIGNED BOWL TO A SOLID SURFACE DECK, FABRICATORS WILL FIND THE MOLDED-IN ALIGNMENT RIM INDENTS TO BE AN ESSENTIAL AID FOR ACHIEVING TRUE POSITION, BOWL-SET, AND NON-TWISTED INSTALLATIONS. WHEN THE BOWL IS PLACED UPSIDE DOWN DURING THE FABRICATION PROCESS THESE INDENTS PROVIDE VISIBLE POINTS OF REFERENCE FOR MEASURING THESE OFFSETS.



ROTATING THE CAST BOWL ON A SANDING TABLE WILL REMOVE THE INSIDE BOWL EDGE RADIUS. THIS PRODUCES A MINIMUM VISIBLE JOINT LINE WHEN BONDING TO SOLID SURFACING. THE RIM FLANGE IS ANGLED AS SHOWN ABOVE SO THAT ONLY A SMALL AMOUNT OF MATRIX NEED BE REMOVED TO GET A SHARP FLAT BONDING SURFACE.



THE HEAVY LINE INDICATES A REGULAR SMOOTH SURFACE THAT CAN BE ACHIEVED BY ROUTER AND LIGHT SANDING AS PART OF THE BOWL TO DECK FABRICATION PROCESS. THIS IS DUE TO THE DESIGN OF THE MOLD TOOLING GEOMETRY AND IS A CONSISTENT FEATURE OF THE BOWL RIM.



MOLD PART	CATALOG No.	DESCRIPTION
MALE	20120	104-10 DEG. SS OVAL
FEMALE	401208	F-104-10 DEG SS OVAL
	401208E	F-104-10 DEG SS EXT. OVERFLOW
NAME	104 OVAL S.S. 21"	
CAST WEIGHT	SCALE 1" = 1' 0"	DATE 8-30-02
		PAGE No. BU-5